



10 x 20 Saltbox

Call toll-free: 1.866.297.3760

By far the most popular design, the salt box begs the word traditional. This extremely versatile cottage has a very rugged Hemlock frame that will withstand the test of time. With 180 sq. ft. of usable space, this building easily lends itself to basic storage, a potting shed or parking for your outdoor toys.

The salt box design originated in New England shortly after the pilgrims landed. The design most likely originated from a shed roof style. An overhang off the front was added for protection and style. It has proved to be a very aesthetically pleasing and practical design for snow country. Many rural farms can be spotted with homes and out buildings with roofs that shed the majority of snow off the back and out of the way.

All of our wood sheds, storage sheds, garden sheds, cottages and utility enclosures are built of the finest Vermont lumber and handcrafted for long life and durability. New England weather can really put a wood garden shed or cottage to the test, and Jamaica Cottage Shop's products have proven to stand the test of time and strength.

- **All Fastening Hardware**
- **Step-by-Step Plans**

Specifications:

Square Footage: 180 sq ft

Overall dimensions: 19'2" W x 11'10" L x 10'6" H

Recommended Foundation: 3" – 4" Crushed Gravel

Floor: 4x6x18' Hemlock Skids

2x6 Rough Sawn Hemlock 24" on center

3/4" CDX Plywood Floor

Walls: 4x4 Post and Beam Wall Framing

83" Front Wall Height, 63" Rear Wall Height

Doors: 5-0 JCS-Built Double Doors with 3x5 Treated Ramp

Windows: Two 2x2 Hinged Barn Sash

Roof: 2x6 Rough Sawn Hemlock Rafters 24" on center

1x4 Roof Strapping 20" on center

2x6 Rough Sawn Hemlock Exposed Collar Ties

Evergreen Corrugated Metal Roofing

Siding: 1" Rough Sawn Pine Board and Battens

1" Rough Sawn Pine Trim for Front & Rear Fascia & Shadow, Corner Boards, Door & Window Trim

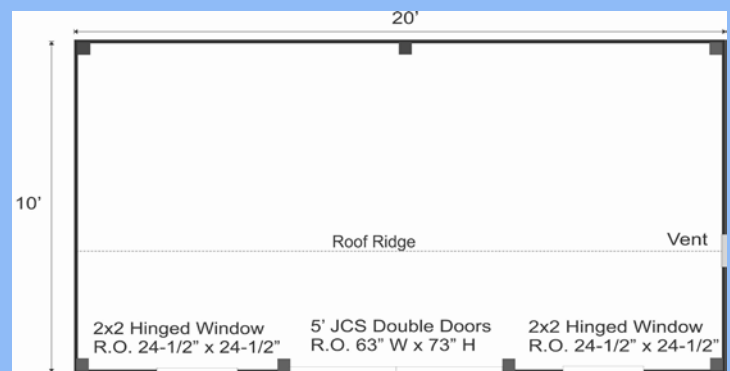
2" Rough Sawn Pine Trim for Gable Fascia, and Shadow

Wood Louvered Vent

Shipping Cube Size: 48" W x 52" H x 145" L

Total Weight: 5100 lbs

Estimated Assembly Time: Two People, 26 hours



Plans \$50

Complete Kit \$7,099

Jamaica Cottage Shop, Inc. engineered the plans for our designs to do-it-yourself homeowners. The detailed plans include foundation options, a shopping list, and a color coded cut list. The trigonometry of the roof triangles has all been simplified with tracing the cut out roof templates. The plans are set for full dimensional lumber and provide a clear step-by-step path.

The rough sawn native Vermont lumber package has all the pieces cut and ready for assembly. It includes a cut and notched hemlock post and beam frame and pre cut pine siding. The fasteners, hardware, windows, and doors are included as well as the step by step plans. The kit is geared to a do-it-yourself homeowner with beginner knowledge of carpentry.

Fully Assembled \$7,099

Fully assembled from native rough sawn lumber here at our manufacturing facility, this design is delivered to your client prepared, truck accessible site in one piece. The building is set and leveled by our delivery crew and ready to use when we leave your site. Due to road restrictions, fully assembled models are available in the northeastern United States only.

