



10x16 Sugar Shack

Call toll-free: 1.866.297.3760

A traditional New England design, the sugar shack is still used today to boil maple syrup. This design features a decorative cupola with the option to upgrade to a functional, venting cupola. Whether you intend to use this building as a working Sugar Shack, simple storage or a workshop, the Sugar Shack design is an asset to any landscape.

All of our wood sheds, storage sheds, garden sheds, cottages and utility enclosures are built of the finest Vermont lumber and handcrafted for long life and durability. New England weather can really put a wood garden shed or cottage to the test, and Jamaica Cottage Shop's products have proven to stand the test of time.

Included with Kit:

- * All Fastening Hardware
- * Step - by - Step Plans

Specifications:

Square Footage: 160 sq/ft

Overall Dimensions: 14'4" H x 11'2" W x 17'2"

Recommended Foundation:

6"-8" of Crushed Gravel

Floor:

Two 6x6x16 Hemlock Skids
2x6 Hemlock Floor Framing 24" on center
3/4" CDX Plywood Floor

Walls:

78" Wall Height
4x4 Post & Beam Wall Framing
2x6 Rough Hemlock Exposed Collar Ties

Doors:

5' JCS-built 2" Think Pine Doors
3x5 Pressure Treated Ramp

Windows:

Two 3x2 eight-light Hinged Barn Sash
Roof: 2x6 Rafters 24" on center
6/12 Gable Roof Pitch 6/12 Cupola Roof Pitch
1x4 Strapping 20" on center
29 Gauge Corrugated Metal Roofing.
Color:Evergreen

Roof:

6/12 Gable Roof Pitch 6/12 Cupola Roof Pitch
1x4 Strapping 20" on center
29 Gauge Corrugated Metal Roofing.
Color:Evergreen

Siding:

1" Pine Board & Batten
Trim: 2x8 Pine Fascia & 2x4 Pine Shadow
1x4 Corner, Door & Window Trim

Wood Louvered Vent

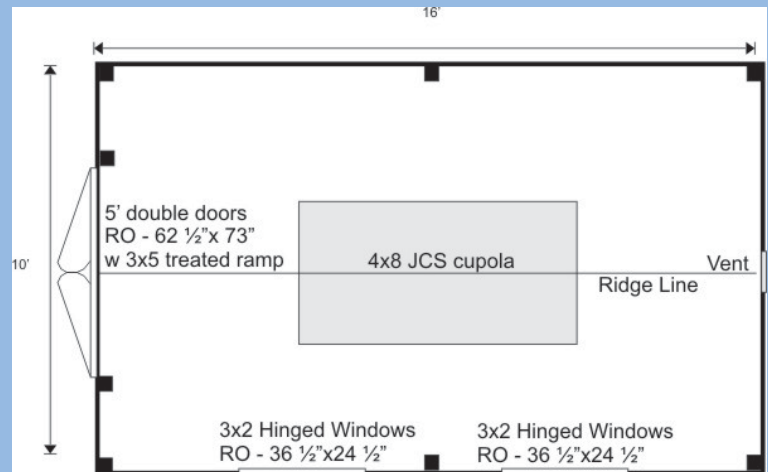
4x8 Decorative Cupola:

1x6 Pine Fascia
1x3 Pine Shadow

Shipping Cube:

42"x48"x192"

Kit Weight: 4,800 lbs
Assembly Time: Two People 36 Hours



Additional Options

- 4x8 Functional Cupola \$850
 - Single JCS Built Door \$ Depends on Size
- See our options pricing on our website for more

Plans \$50.00

Jamaica Cottage Shop, Inc. engineered the plans for our designs to do-it-yourself homeowners. The detailed plans include foundation options, a shopping list, and a color coded cut list. The trigonometry of the roof triangles has all been simplified with tracing the cut out roof templates. The plans are set for full dimensional lumber and provide a clear step-by-step path.

Pre-Cut Kit \$6,807

The rough sawn native Vermont lumber package has all the pieces cut and ready for assembly. The fasteners, hardware, windows, and doors are included as well as the step by step plans. The kit is geared to a do-it-yourself homeowner with beginner knowledge of carpentry.