



10x20 Smithaven

Call Toll-FREE: 1.866.297.3760

The Smithaven is the perfect choice for use as a workshop, artisan studio, backyard office or a stylish storage shed. The extra barn sash and transom windows offer lots of natural light while the dormer adds extra headroom to the space. If you are looking for something to be used year-round we offer many options to customize your building to fit all of your needs.

All of our wood sheds, storage sheds, garden sheds, cottages and utility enclosures are built of the finest Vermont lumber and handcrafted for long life and durability. New England weather can really put a wood garden shed or cottage to the test but Jamaica Cottage Shop's products have proven to stand the test of time.

Included in the Kit: *All Fastening Hardware
*Step-by-Step Plans

Specifications

Square Footage: 200 sqft

Overall Dimensions: 10'6" H x 11'2" W x 21'2" L

Recommended Foundation: 6"-8" of Crushed Gravel

Floor: Two 6x6x16' Rough Sawn Hemlock Skids
2x6 Rough Sawn Hemlock Floor joists 24" on Center
3/4" CDX Plywood Flooring

Walls: 4x4 Post and Beam Wall Framing
Short Wall Height: 36"
Tall Wall Height: 60"
Dormer Wall Height: 89"

Doors: Single 3-0 JCS-Built Arched Door, no ramp

Windows: Three 2x2 Hinged Barn Sash Windows
One 8x1 Fixed Transom Window
One 16"x21" Fixed Barn Sash Window

Roof: 2x6 Rough Sawn Hemlock Rafters 24" on center
1x4 Strapping 20" on center
1x6 Rough Sawn Hemlock Exposed Collar Ties
Corrugated Metal Roofing: 29g Metal 29 gauge
12/12 Roof Pitch; 3/12 Dormer Pitch

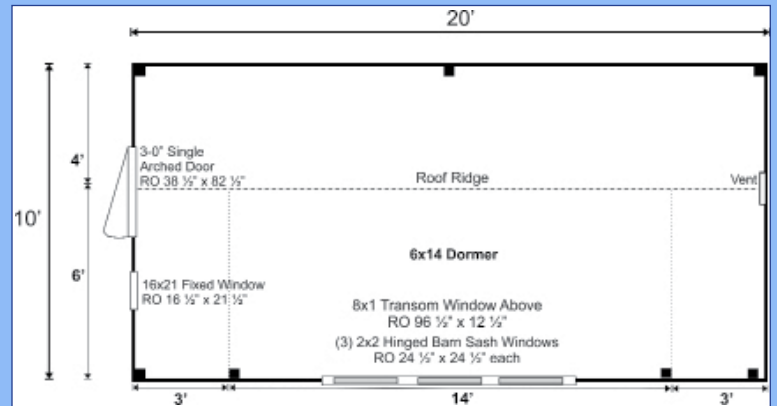
Siding: 1" Rough Sawn Pine Board & Batten
2" Rough Sawn Pine Fascia & Shadow
1" Rough Sawn Pine Corner, Door & Window Trim

Wood Louvered Vent

Cube size: (2) Pallets: 45"W x 48"H x 169"L (4,798 lbs)
48"W x 26"H x 147"L (1,574 lbs)

Overall Weight: 6,372 lbs

Assembly Time: 2 people, 40 Hrs



Pre-Cut Kit

The rough sawn native Vermont lumber package has all the pieces cut and ready for assembly. The fasteners, hardware, windows and doors are included as well as the step-by-step DIY plans. The kit is geared to a do-it-yourself homeowner with a basic knowledge of carpentry.

Plans

Jamaica Cottage Shop, Inc. engineered the plans for our designs for the do-it-yourself homeowner. The detailed plans include foundation options, a shopping list, and a color coded cut list. The trigonometry of the roof triangles has all been simplified with tracing the cut out roof templates. The plans are set for full dimensional lumber and provide a clear step-by-step path.

Additional Options

- Three Season Insulation Package
- Four Season Insulation Package
- 2x2 Insulated Window
- Roofing Color Change