



14x20 Gibraltar

Call Toll-Free: (866) 297-3760

The 14x20 Gibraltar is a clever little design that includes a 4x20 porch, an 10x20 interior space and an eye-catching barrel arch at the entrance. The elegant country charm is achieved with the large barn sash windows and rustic board and batten siding and is protected by a green corrugated metal roof. The post and beam frame makes this wooden shed a strong backyard out-building. A sturdy interior work bench has also been included. This rugged and attractive design is beautiful from the front view. Easily convert this into a tiny house or a small country store. It will make a perfect getaway, garden or potting shed, a reading or writing haven, a pool house or motorcycle work shop.

Pictures may reflect client upgrades and modifications that do not come standard. Be sure to read the standard written specs below and check out the floor plan on the right for the standard option. Cottage Associates can be reached via phone or email if you have any questions.

- Included in the kit:**
- * All Fastening Hardware
 - * Step-by-Step Plans

Specifications:

Specifications: 200 Interior Space + 80 Porch = 280sq ft

Overall Dimensions: 15'2" W x 21'2" L x 10'6" H

Recommended Foundation: 8-12" Crushed Gravel

Floor: Two 6"x6"x20' Hemlock Skids

2x6" Rough sawn Hemlock Floor Framing 24" On Center

3/4" CDX Plywood Flooring

1" Rouch sawn Hemlock Decking on Porch

Walls: 4x4" Post and Beam Wall Frame

95" Front Wall Height

71" Rear and Porch Wall Height

Doors: Single 2'-8" JCS-built Door w/ 16x21" Window

Siding: 1" Rough sawn Pine Board and Batten Siding

1x4" Rough Sawn Pine Corner Boards, Door & Window Trim

2x8" Rough sawn Pine Fascia & 2x4" Shadow Trim

Windows: Four 3x2' Eight-light Hinged Barn Sash Windows

Roof: 2x6" Rough Sawn Hemlock Rafters 24" On Center

1x4" Strapping 20" On Center on Rear

5/12 Gable Roof Pitch

5/12 Pitch Dormer

29 Gauge corrugated MEtal Roofing: Evergreen

Porch: 80sq ft with Four 4x4" Hemlock Posts

72" Barrel Arch

Workbench: 10' Long Workbench Under Windows

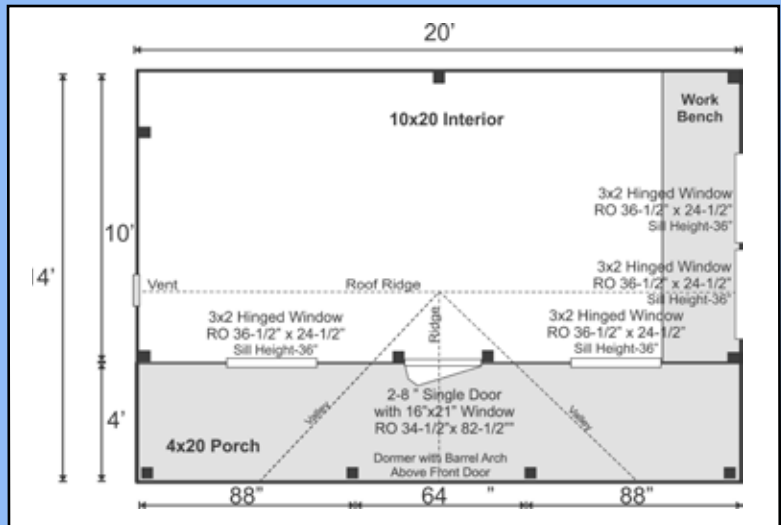
34" Finished Height 30" Finished Depth

Wood Louvered Vent

Kit Weight: 5800 lbs

Shipping Cube Size: 42x56x168"

Assembly Time: 2 People, 32 Hours



Additional Options

- | | |
|-------------------|--------------------------------|
| 8' Walls | Electical Package |
| Double Doors | Plumbing Package |
| Roof Color Change | Natures Head Composting Toilet |

Plans

Jamaica Cottage Shop, Inc. designed these plans for do-it-yourself homeowners. The detailed plans include foundation options, a shopping list, and a color coded cut list. The trigonometry of the roof triangles has all been simplified with tracing the cut-out roof templates. The plans are set for full dimensional lumber and provide a clear step-by-step path.

Complete Kit

The rough sawn native Vermont lumber package has all the pieces cut and ready for assembly. The fasteners, hardware, windows, and doors are included as well as the step by step plans. The kit is geared to a do-it-yourself homeowner with beginner knowledge of carpentry.