



14x40 Gibraltar

Call Toll-Free: (866) 297-3760

The 14x40 Gibraltar is a clever little design that includes a 4x40 porch, an 10x40 interior space, and an eye-catching barrel arch at the entrance. The elegant country charm is achieved with the large barn sash windows and rustic board and batten siding and is protected by a green corrugated metal roof. It makes a perfect getaway, garden or potting shed, a reading or writing haven, a pool house or motorcycle work shop. Insulate it and finish it out for 4-season year round use as a tiny house, guest house, or hunting cabin.

The post and beam frame makes this wooden shed a strong backyard out-building. A sturdy interior work bench has also been included. This rugged and attractive design is beautiful from the front view.

- Included in the kit:**
- * All Fastening Hardware
 - * Step-by-Step Plans

Specifications:

Square Footage: 400 Living Space +160 Porch= 560 sq ft

Overall Dimensions: 15'2" wide x41'2" long x10'6" high

Recommended Foundation: 8"-12" Crushed Gravel

Floor: Two 6x6x40' Hemlock Skids (FA w/ Steel Frame)

2x6 rough sawn Hemlock Joists; 24" on Center

3/4" CDX Plywood Floor Decking

1" rough sawn Hemlock Porch Decking

Walls: 4x4 Post & Beam Wall Framing

90" Front Wall Height

70" Rear and Porch Wall Height

Doors: Single 2-8 JCS-built rough sawn Pine Door with 16"x21" Fixed Window, No Ramp

Windows: Two 3x2 eight-lite Hinged Barn Sash

Four 4x2 ten-lite Hinged Barn Sash Windows

Roof: 2x6 rough sawn Hemlock Rafters; 24" on Center
1" Strapping; 20" on Center on rear

5/12 Gable Dormer Pitch

Corrugated 29g Metal Roofing, Color: Evergreen

Siding: 1" rough sawn Pine Board & Battens

1" rough sawn Pine Corner Board, Door, & Window Trim; 2" rough sawn Pine Fascia & Shadow Trim

Porch: 160 sqft Porch with Six 4x4 Hemlock Posts
64" Radius Barrel Arch

Workbench: 10'L x 30"W x 34"H rough sawn Pine built-in Workbench

Wood Louvered Vent

Kit Weight: 13,200 lbs

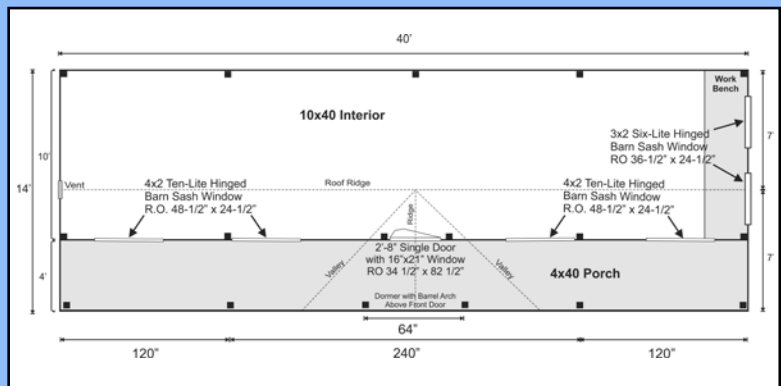
Shipping Cube Size: **Cube #1:** 42"x56"x168"

Cube #2: 42"x56"x192"

Cube #3: 42"x48"x120"

Assembly Time: 2 People, 60 hours

Pictures may reflect client upgrades and modifications that do not come standard. Be sure to read the standard written specs below and check out the floor plan on the right for the standard option. Cottage Associates can be reached via phone or email if you have any questions.



Additional Options

- Add a 3- or 4- Season Insulation Package
- Add Double Doors • Add a Wood Stove Insert
- Upgrade to 8 ft Walls

Plans

Jamaica Cottage Shop, Inc. designed these plans for do-it-yourself homeowners. The detailed plans include foundation options, a shopping list, and a color coded cut list. The trigonometry of the roof triangles has all been simplified with tracing the cut-out roof templates. The plans are set for full dimensional lumber and provide a clear step-by-step path.

Complete Kit

The rough sawn native Vermont lumber package has all the pieces cut and ready for assembly. The fasteners, hardware, windows, and doors are included as well as the step by step plans. The kit is geared to a do-it-yourself homeowner with a basic knowledge of carpentry.