



# 10x20 Heritage

Call Toll-Free: (866) 297-3760

This building has been designed in response to the many who have asked for a multi purpose building. It took one year and twelve revisions before this design was finalized. While aesthetically pleasing, it provides extremely versatile space. This design features 5' double doors on the gable end, adequate for a lawn tractor, ATV, and/or firewood storage. With the addition of a workbench and cabinet space, the interior can easily be converted into a potting area or workshop, or even modified for tiny living. An interior door provides easy access and partitioning between the two sides of the building. Contact our client care team to make this design work for you.

All of our wood sheds, storage sheds, garden sheds, cottages and utility enclosures are built of the finest Vermont lumber and handcrafted for long life and durability. New England weather can really put a wood garden shed or cottage to the test, and Jamaica Cottage Shop's products have proven to stand the test of time.

- Included in the kit:**
- \* All Fastening Hardware
  - \* Step-by-Step Plans

### Specifications:

**Square Footage:** 220 sq ft

**Overall dimensions:** 13'2" wide x 21'2" long x 10'6" high

**Recommended Foundation:** 6" – 8" Crushed Gravel

**Floor:** Two 6x6x20' Hemlock Skids

2x6 rough sawn Hemlock; 24" on center

3/4" CDX Plywood Floor Decking

10x12 Potting Side; 10x10 Storage Side

2x10 Pop Out on Potting Side

(considered 12x20 for shipping purposes)

**Walls:** 4x4 Post & Beam Wall Framing

78" Wall Height, 10' Full Interior Partition

**Doors:** 5'0" JCS-built 2" thick rough sawn Pine Double-Doors w/ 3x5 Treated Ramp on Storage Side

3'0" JCS-built 2" thick rough sawn Pine Single Door

2'8" JCS-built 2" thick rough sawn Pine Single Door in Partition

**Windows:** Two 2x2 six-lite Hinged Barn Sash Windows

One 3x2 eight-lite Hinged Barn Sash Window

**Roof:** 2x6 rough sawn Hemlock Rafters; 24" on center

1x4 Roof Strapping; 20" on center

6/12 Roof Pitch, 1x6 Rough Hemlock Exposed Collar Ties

Corrugated 29g Metal Roofing, Color: Evergreen

**Siding:** 1" rough sawn Pine Board & Battens

1" Rough Sawn Pine Corner, Door & Window Trim

2" Rough Sawn Pine Fascia & Shadow Trim (no soffit)

**Wood Louvered Vent**

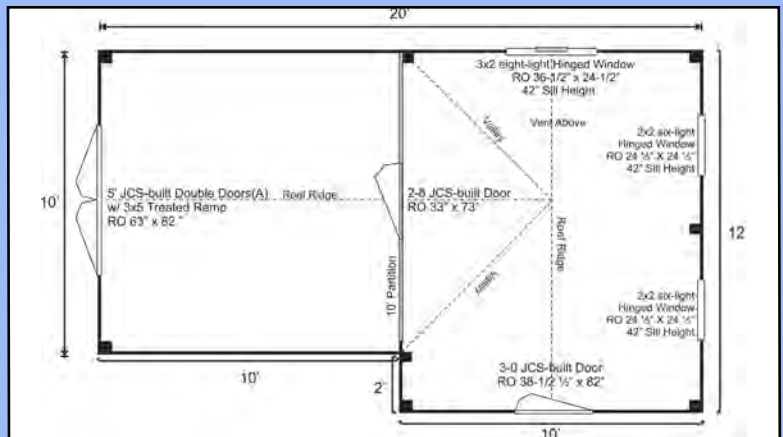
**Kit Weight:** #1: 3,300 lbs #2: 2,700 lbs

**Shipping Cube Size:** #1: 42" W x 48" H x 144" L

#2: 42" W x 48" H x 120" L

**Assembly Time:** 2 People, 52 hours

*Pictures may reflect client upgrades and modifications that do not come standard. Be sure to read the standard written specs below and check out the floor plan on the right for the standard option. Cottage Associates can be reached via phone or email if you have any questions.*



### Ask about Additional Options including...

**Add 2' Cedar Flower Boxes**

*(including liners and supports)*

**Upgrade the Roof Color**

**Four Season Insulation Package**

### Plans

Jamaica Cottage Shop, Inc. designed these plans for do-it-yourself homeowners. The detailed plans include foundation options, a shopping list, and a color coded cut list. The trigonometry of the roof triangles has all been simplified with tracing the cut-out roof templates. The plans are set for full dimensional lumber and provide a clear step-by-step path.

### Complete Kit

The rough sawn native Vermont lumber package has all the pieces cut and ready for assembly. The fasteners, hardware, windows, and doors are included as well as the step by step plans. The kit is geared to a do-it-yourself homeowner with basic knowledge of carpentry.