



# 24x48 Equipment Shed

Call Toll-Free: (866) 297-3760

Jamaica Cottage Shop has designed a pole barn to house all of your equipment. We are pleased to offer this popular post and beam design. The 129" wide, 109" high doors can provide storage for any size of equipment. Rugged post and beam techniques passed down through the centuries are used to create a beautiful and durable out-building reminiscent of old New England. 2x12 Box beam construction provides a robust yet easy to build structure. The salt box roof sheds the majority of the snow and rain to the back of the building. The kit is hand made with rough sawn hemlock and pine lumber, the package includes all fastening hardware, metal roofing and step by step plans.

Add options such as windows, doors, and a loft to customize the space for your needs.

### Specifications

**Square Footage:** 1,152 square feet

**Overall Dimensions:** 49'6" W x 25'6" L x 18'6" H

**Recommended Foundation:** Concrete Slab or 8"-12" Crushed Gravel

**Floor:** 6x6 Pressure Treated Sill Plate  
No Floor System

**Walls:** 6x6 Hemlock Post & Beam Framing  
2x12 Box Beam Construction  
122" Front Wall Height  
90" Rear Wall Height

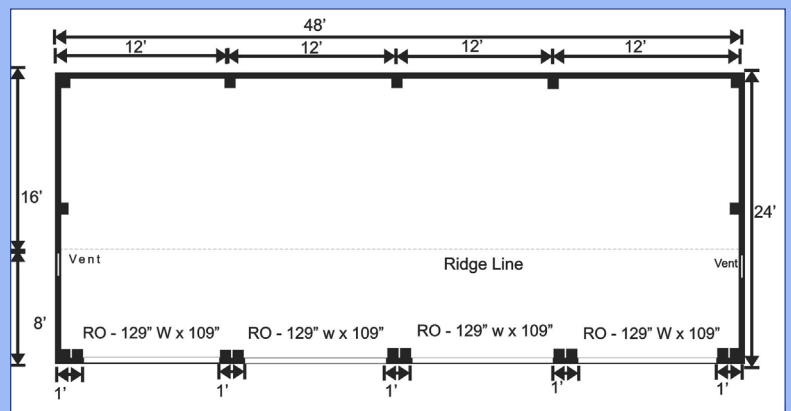
**Roof:** 2x8 rough sawn Hemlock Rafters 24" on Center  
12" Overhang on all sides  
2x10 Ridge Pole  
1x4 Strapping 20" on Center  
12/12 Front Pitch 8/12 Rear Pitch  
Corrugated Metal Roofing: 29g Color: Evergreen

**Siding:** 1" rough sawn Pine Board and Batten  
1x12" rough sawn Pine Fascia Trim  
1x4" rough sawn Pine Shadow, Door, and Corner Trim  
2 Wood Louvered Vents in gable peaks

**Kit Weight:** 12,000 lbs

**Assembly Time:** Two People, 40 hours

**Shipping Cube Size:** 2 cubes, 42"W x 60"H x 192"L



### Additional Options

Garage Bay Doors	\$1,810/ea
4'x8' RTA JCS-Built Decorative Cupola	\$650
Floor System	\$4,954
2x10 Hemlock Floor Joists 16" on Center, 3/4" CDX	
Roofing color change	\$50
3-0 Nine-light Insulated Steel Door	\$574

### Plans

Jamaica Cottage Shop, Inc. engineered the plans for our designs to do-it-yourself homeowners. The detailed plans include foundation options, a shopping list, and a color coded cut list. The trigonometry of the roof triangles has all been simplified with tracing the cut out roof templates. The plans are set for full dimensional lumber and provide a clear step-by-step path.

### Complete Kit

The rough sawn native Vermont lumber package has all the pieces cut and ready for assembly. It includes a cut and notched hemlock post and beam frame and pre cut pine siding. The fasteners, hardware, windows, and doors are included as well as the step by step plans. The kit is geared to a do-it-yourself homeowner with knowledge of carpentry.