

# 14 x 20 Gibraltar

Call toll-free: 1.866.297.3760

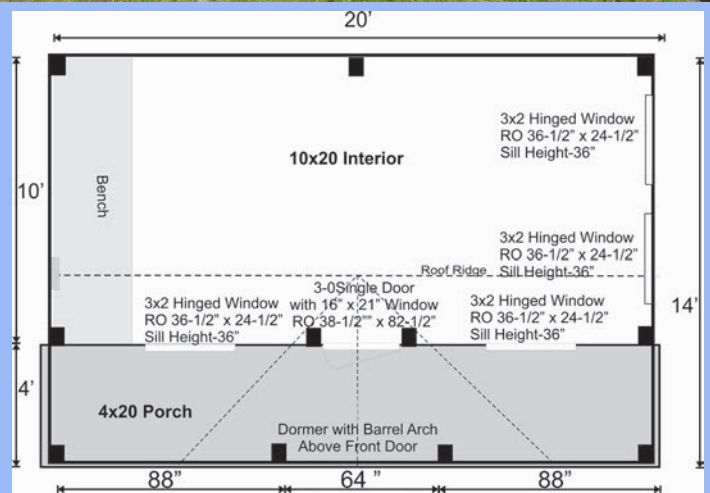
The 14x20 Gibraltar is a clever little design that includes a 4x20 porch, an 10x20 interior space and an eye-catching barrel arch at the entrance. The single door is complemented by an additional five foot wide double door on the gable end. The elegant country charm is achieved with the large barn sash windows and rustic board and batten siding and is protected by a green corrugated metal roof. The post and beam frame makes this wooden shed a strong backyard out-building. A sturdy interior work bench has also been included. This rugged and attractive design is beautiful from the front view. With the large double doors it is very capable of handling all your storage needs. It will make a perfect getaway, garden or potting shed, a reading or writing haven, a pool house or motorcycle work shop.

**Included with Kit:**

- \* All Fastening Hardware
- \* Step - by - Step Plans

**Specifications:**

- Square Footage:** 280 sq ft/ 200 sq ft Interior
- Overall Dimensions:** 15'2" W x 21'2" L x 10' 6" H
- Recommended Foundation:** 8"-12" Crushed Gravel
- Floor:** Two 6x6x20' Hemlock Skids  
2x6 Rough Sawn Hemlock Floor Framing 24" on Center  
3/4" CDX Plywood Flooring  
1" Rough Sawn Hemlock Decking on Porch  
4'x20' Porch with 10'x20' Interior Space
- Walls:** 4x4 Post and Beam Wall Frame  
95" Front Wall Height  
71" Rear and Porch Wall Height
- Doors:** Single 2-8 JCS-built Door w/ 16x21 Window
- Siding:** 1" Rough Sawn Pine Board and Batten Siding  
1x4 Rough Sawn Pine Corner Boards, Door & Window Trim  
2x8" Rough Sawn Pine Fascia & 2x4" Shadow Trim
- Windows:** Four 3x2 Eight-lite Hinged Barn Sash Windows
- Roof:** 2x6 Rough Sawn Hemlock Rafters 24" on Center  
1x4 Strapping 20" on Center on Rear  
5/12 Gable Roof Pitch  
5/12 Pitch Dormer  
29 Gauge Corrugated Metal Roofing: Evergreen
- Porch:** 80 sq. ft. Porch with Four 4x4 Hemlock Posts  
72" Radius Barrel Arch
- Work Bench:** 10' Long Workbench Under Windows  
34" Finish Height 30" Finish Depth
- Wood Louvered Vent**
- Kit Weight: 5800 lbs**
- Shipping Cube Size: 42x56x168"**
- Assembly Time: 2 People, 32 hours**



**Make Your Gibraltar into a Tiny House!**

8' Walls	\$492	Three Season Insulation	\$1,806
Double doors	\$433	Four Season Insulation	\$5,887
Roofing color change	\$50	Natures Head Composting Toilet	\$985
Electrical Package		Starting at	\$2,695
Plumbing Package		Starting at	\$2,895

**Plans \$39.95**

Jamaica Cottage Shop, Inc. engineered the plans for our designs to do-it-yourself homeowners. The detailed plans include foundation options, a shopping list, and a color coded cut list. The trigonometry of the roof triangles has all been simplified with tracing the cut out roof templates. The plans are set for full dimensional lumber and provide a clear step-by-step path.

**Complete Kit Starting at \$9,995**

The rough sawn native Vermont lumber package has all the pieces cut and ready for assembly. It includes a cut and notched hemlock post and beam frame and pre cut pine siding. The fasteners, hardware, windows, and doors are included as well as the step by step plans.